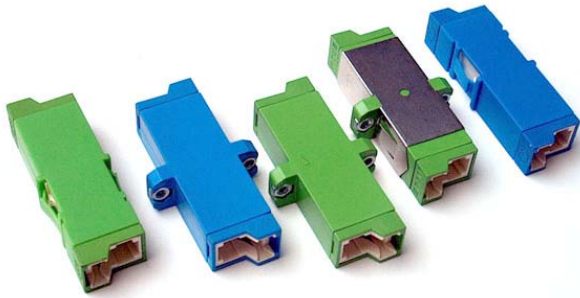


LSH (E2000) adapters

Description:

The LSH adapters are offered in MM or SM performances, for connectors with PC and APC polishing method. LSH integrated protective cap protects ferrule from dust and rules out any laser light emissions. LSH adapter is excellent for high packing density.



Features:

- Interchangeable colour code frames.
- Integrated guiding tracks for the plug body.
- Spring-loaded shutters against eye-damaging laser radiation.
- Latching mechanism for the plug.

Application:

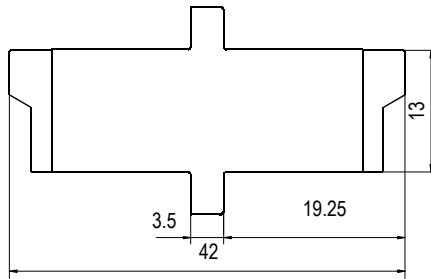
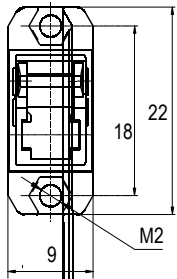
- Telecom
- LAN, WAN
- CATV
- Sensor Systems
- Measuring Technique
- Utilities
- Railways

Ordering code:

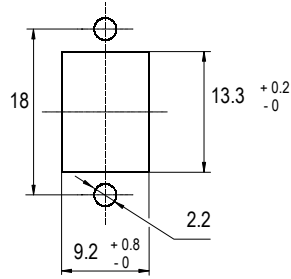
A - LSH / (A)PC - XX - XX XX - XX

type SC FC ST LSH (E2000)	sleeve 01 zirconia	01 flange 02 flange+mounting clip 03 mounting clip
color body		frame
BL blue GR green BG beige		BL blue GR green BG beige WH white RD red BR brown YE yellow OR orange

Dimensions:



Recommended panel hole



Samples of Adapters



A-LSH/APC-01-GR-GR-01



A-LSH/APC-01-GR-GR-02



A-LSH/PC-01-BL-BL-01



A-LSH/APC-01-GR-GR-03



A-LSH-FC/PC-01-BL-BL-01



A-LSH-SC/PC-01-BL-BL-01



A-LSH-SC/APC-01-GR-GR-01



A-LSH-NPC215/APC-01-GR-GR-0